

Leighton Hospital Emergency Department Monthly Bulletin: April 2010 – March 2011

This bulletin provides a breakdown of all injury attendances at Leighton Hospital Emergency Department (ED) between April 2010 and March 2011.

Between April 2010 and March 2011 there were 39,427 injury attendances. Injury attendances peaked in June (n=3,829), with January (n=2,607) having the least number of injury attendances (**Figure 1**).

For all months there were more male injury attendances than female presenting at Leighton Hospital ED (56%).

Figure 2 presents the age group of injury attendances. Across the whole year the majority of injury attendances were made by individuals aged 30-59 years.

Table 1 details the injury group of injury attendances. The majority of injury attendances

were classified as 'other injury' (86%); 5% were recorded as road traffic collisions (RTCs) and 3% assaults.

Table 2 illustrates the source of referral for patients presenting with injuries. The majority (71%) of injury attendees self-referred.

Table 3 presents injury attendances by location of incident. A third (32%) were recorded as occurring in a public place and 29% in the home.

Table 4 shows the discharge destination of injury attendances. Almost seven in ten of attendees were discharged (68%).

Assault attendees presenting at Leighton Hospital ED between April 2010 and March 2011 were mainly male (70%) and the majority (45%) were aged between 18 and 29 years of age. **Table 5** shows the primary location of assault was recorded as occurring in a public place (41%).

Figure 1: Gender of injury attendances by month, April 2010 to March 2011

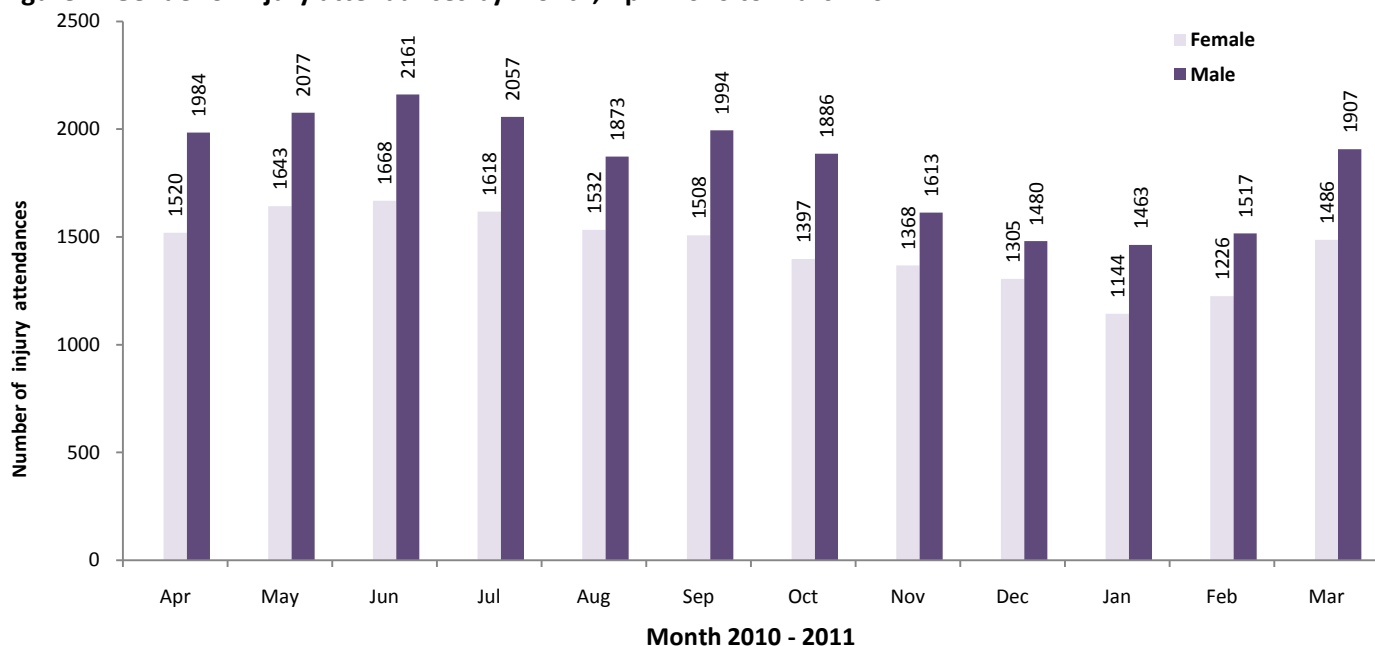


Figure 2: Age group of injury attendances by month, April 2010 to March 2011

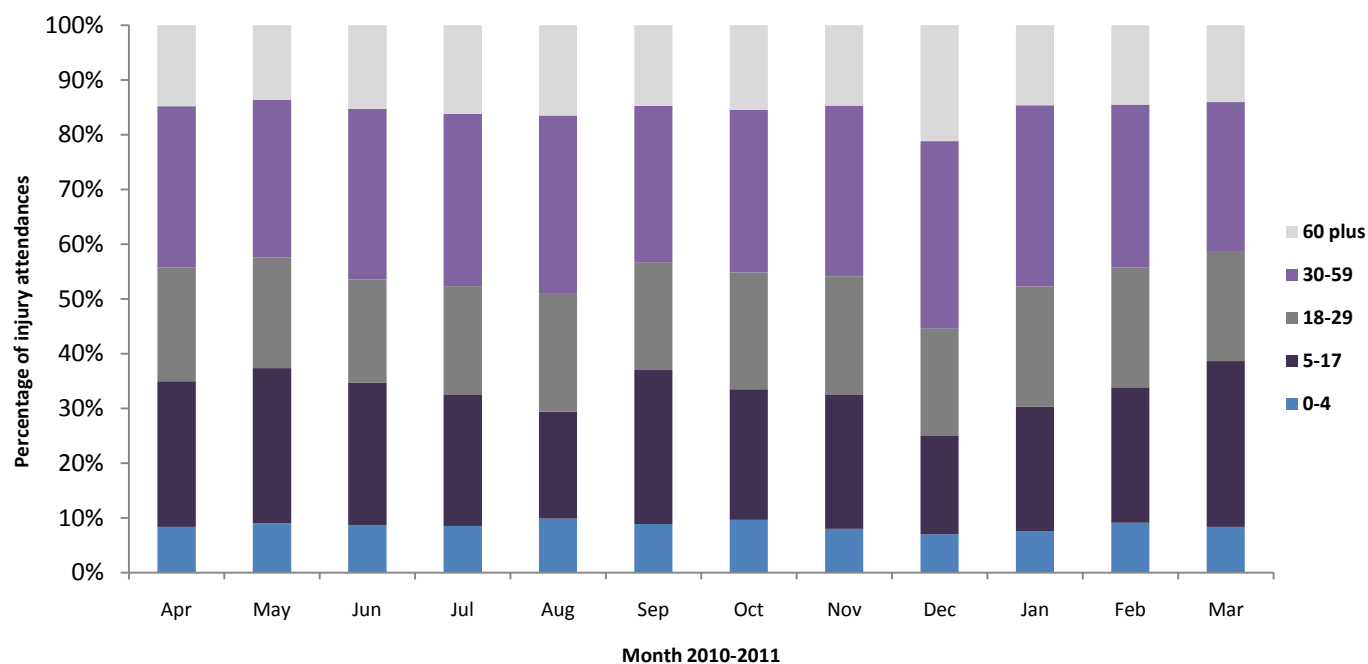


Table 1: Injury attendances by injury group, April 2010 to March 2011¹²

Injury group	Apr	May	Jun	Jul	Aug	Sep	Oct	Nov	Dec	Jan	Feb	Mar	Total	%
Other injury	3023	3242	3393	3228	2906	3005	2772	2493	2432	2219	2373	2892	33978	86
RTC	169	214	152	144	185	177	213	218	177	155	144	171	2119	5
Assault	107	91	99	95	126	116	97	101	85	96	52	103	1168	3
Sports injury	89	69	62	66	61	100	125	101	20	78	104	149	1024	3
Deliberate self-harm	81	66	61	51	62	54	48	49	52	40	52	51	667	2
Bites/stings	35	38	62	91	65	50	28	19	19	19	18	27	471	1
Total	3504	3720	3829	3675	3405	3502	3283	2981	2785	2607	2743	3393	39427	100

Table 2: Injury attendances by source of referral, April 2010 to March 2011

Source of referral	Apr	May	Jun	Jul	Aug	Sep	Oct	Nov	Dec	Jan	Feb	Mar	Total	%
Self referral	2606	2759	2745	2656	2548	2365	2184	1960	1897	1945	1954	2389	28008	71
Other	385	373	448	444	350	478	499	466	319	227	324	428	4741	12
Emergency services	321	390	361	318	361	369	343	347	368	285	289	329	4081	10
Educational establishment	***	47	64	58	***	83	80	69	60	43	46	108	696	2
Referred from minor injuries unit	54	45	59	45	50	60	55	43	28	34	44	47	564	1
Work	29	35	63	63	31	63	56	51	45	31	33	45	545	1
General practitioner	33	19	40	30	22	28	25	14	24	16	29	23	303	1
NHS direct	16	***	17	13	***	17	16	***	***	6	***	7	126	0
Health care provider	13	13	11	21	10	16	***	10	7	9	***	***	122	0
Unknown	6	18	11	16	11	***	9	7	11	***	9	9	121	0
Police	***	12	***	***	11	13	8	8	19	7	11	***	117	0
Local authority social services	***	***	***	***	***	***	***	***	***	***	***	***	***	0
Total	3504	3720	3829	3675	3405	3502	3283	2981	2785	2607	2743	3393	39427	100

¹ *** Please note that all numbers less than five have been suppressed in line with patient confidentiality and if there is only one number in a category then two numbers will be suppressed at the next level (e.g. <6) in order to prevent back calculations from totals.

² Due to low numbers and patient confidentiality firework injuries have been categorised under other injury.

Table 3: Injury attendances by location of incident, April 2010 to March 2011

Incident location	Apr	May	Jun	Jul	Aug	Sep	Oct	Nov	Dec	Jan	Feb	Mar	Total	%
Public place	1186	1163	1240	1235	1162	1130	1080	916	950	752	744	970	12528	32
Home	1011	1130	1126	1070	987	1041	969	865	785	657	769	874	11284	29
Unknown	683	689	754	621	799	545	499	406	463	696	632	714	7501	19
Work	239	247	253	266	203	272	263	277	214	186	201	207	2828	7
Other	213	261	277	328	240	219	206	222	199	134	186	274	2759	7
Educational establishment	172	230	179	155	14	295	266	295	174	182	211	354	2527	6
Total	3504	3720	3829	3675	3405	3502	3283	2981	2785	2607	2743	3393	39427	100

Table 4: Injury attendances by discharge destination, April 2010 to March 2011

Discharge destination	Apr	May	Jun	Jul	Aug	Sep	Oct	Nov	Dec	Jan	Feb	Mar	Total	%
Discharged	2352	2606	2583	2455	2393	2446	2270	2041	1754	1842	1858	2354	26954	68
Referred	971	947	1054	1062	906	937	903	837	910	668	754	881	10830	27
Other	99	94	86	110	63	77	63	67	82	42	75	91	949	2
Admitted	82	73	106	48	43	42	47	36	39	55	56	67	694	2
Total	3504	3720	3829	3675	3405	3502	3283	2981	2785	2607	2743	3393	39427	100

Table 5: Location of assault for assault attendances, April 2010 to March 2011

Assault location	Apr	May	Jun	Jul	Aug	Sep	Oct	Nov	Dec	Jan	Feb	Mar	Total	%
Public place	49	37	32	47	48	36	39	44	31	40	24	47	474	41
Unknown	21	15	29	22	37	35	22	13	16	27	8	24	269	23
Home	25	24	25	14	32	27	18	21	18	18	7	14	243	21
Other	***	11	6	6	6	8	9	9	10	***	8	***	85	7
Educational establishment	***	***	***	***	***	***	***	8	***	6	***	7	52	4
Work	7	***	***	***	***	***	***	6	***	***	***	***	45	4
Total	107	91	99	95	126	116	97	101	85	96	52	103	1168	100

Published April 2011

Jennifer Brizell (Merseyside and Cheshire TIIG officer)

Centre for Public Health, Faculty of Health and Applied Social Sciences, Liverpool John Moores University

2nd Floor, Henry Cotton Campus, 15-21 Webster Street, Liverpool, L3 2ETTel: 0151 231 4500 Email: j.s.brizell@ljmu.ac.ukWebsite: www.tiig.info (please note all data requests should be made through the TIIG website)